



PARENT INFORMATION BOOKLET

2026



'Together Everyone Achieves More'

INTRODUCTION

01

OUR ACKNOWLEDGEMENT OF COUNTRY

Ngala karditj noongar moort keyen kaadak nidja boodja.

We would like to acknowledge the traditional custodians and the Noongar people of the Whadjuk land we play on, learn on and are meeting on today at Midvale Primary School.

We would like to thank the elders past and present - you protected this land, and we will join with you to take care of it.

Working together we have strong hearts - moorditj koort.

OUR MORALE PURPOSE

“

As a community we create a safe learning environment driven by high expectations for all students to achieve success in all areas.

”



WELCOME

02

KAYA!

Welcome to Midvale Primary School

We provide quality education from Kindergarten to Year 6, with around 350 students and growing.

Our motto, *Together Everyone Achieves More*, reflects our commitment to collaboration with students, staff, families and the wider community. We are known for outstanding pastoral care, early intervention and inclusive education, particularly for students with special needs.

We foster a safe, respectful and inclusive environment through Positive Behaviour Support (PBS), to support student achievement. Our modern facilities include interactive smartboards, iPads, computer lab, library, Early Childhood Education centre and an enclosed undercover area.

We warmly welcome you to Midvale Primary School, where every student's success is our priority.

Tania Leete – *Principal*



SCHOOL INFORMATION

03

CONTACT



Midvale Place, Midvale WA 6056



9218 6800



midvale.ps@education.wa.edu.au



www.midvaleps.wa.edu.au



DATES AND TIMES

Public Holidays and Pupil Free Days

Semester 1	Term 1 Monday, February 2nd – Friday, April 3rd	Labour Day - Monday, March 2nd
		Good Friday - Friday, April 3rd
	Term 2 Monday, April 20th – Friday, July 3rd	Pupil Free Day - Monday, May 25th
		WA Day - Monday, June 1st
Semester 2	Term 3 Monday, July 20th – Friday, September 25th	Pupil Free Day - Monday, August 24th
		King's Birthday - Monday, September 28th
	Term 4 Monday, October 12th Friday, December 18th	Pupil Free Day - Monday, October 12th

School Hours

School Hours	
School Gates Open	8:25 am
Classrooms Open	8:30 am
School Commences	8:40 am
Lunch Break	11:00 - 11:30 am
Recess	1:30 - 1:50 pm
School Finishes	2:40 pm

GENERAL INFO

04

CONTRIBUTIONS AND CHARGES

Voluntary Contributions for 2026 - \$60.00 per child for Primary School
\$50.00 per child for Kindergarten

Please discuss payment any payment concerns with the Front Office or Principal.
Payment is to be made at the Front Office during the first two weeks of school.

PAYMENT METHODS

Payments for school activities can be made through:

- Cash or EFTPOS at the school office.
- Direct deposit into the school's bank account
- Over the phone with credit card

Progress payments are welcome.

BSB

Midvale Primary School

BSB **066-040**

ACCT NO. **1990 2722**

Reference **Child's Name**

*Or pay at the front office with
cash or card.*

FACTIONS

Each child is allocated a faction for sport and other school activities. Siblings will be placed in the same faction.
Coloured shirts available for purchase at the **Front Office**.

AVON

SWAN

HELENA

ASSEMBLIES

Every student participates in one class assembly item each year.

HOMEWORK

Students are expected to engage in reading every night.

LIBRARY

Students need a water-resistant library bag and all books returned to borrow books.

NEWSLETTER

The newsletter will be issued to the oldest child in every family twice a term.
These can also be found on the school website.

DOGS AND ANIMALS

For health and safety, dogs and other animals are not allowed on school grounds.



SCHOOL VALUES

Midvale Primary School is a PBS (Positive Behaviour Support) School. PBS is a school wide framework aimed at improving the academic and behavioural outcomes of all students. Our goal is to create a safe, positive learning environment where students are engaged and successful.



Our school values are:

We are **SAFE**

We are **THOUGHTFUL**

We are **ACHIEVERS**

We are **RESPECTFUL**

BEHAVIOUR SUPPORT

Undesired behaviours are recorded and students go through our behaviour management process.

Step 1 - Verbal Reminder

Step 2 - Time out in class

Step 3 - Time out in buddy class

Step 3 may be repeated

Major - Sent to office

	<h2>We Are</h2>
Safe	<ul style="list-style-type: none">• We follow instructions the first time• We keep our hands, feet and objects to ourselves• We walk safely around the school• We wear our hats outside• We only access information we are allowed to
Thoughtful	<ul style="list-style-type: none">• We encourage others• We include others• We use our manners• We use kind words• We work cooperatively• We follow rules to games• We put equipment away
Achiever	<ul style="list-style-type: none">• We always do our best• We continue when challenged• We come to school prepared and ready to learn• We be a role model
Respectful	<ul style="list-style-type: none">• We take care of our school• We wear our uniform• We stop, look and listen to others• We use our manners



ATTENDANCE



06

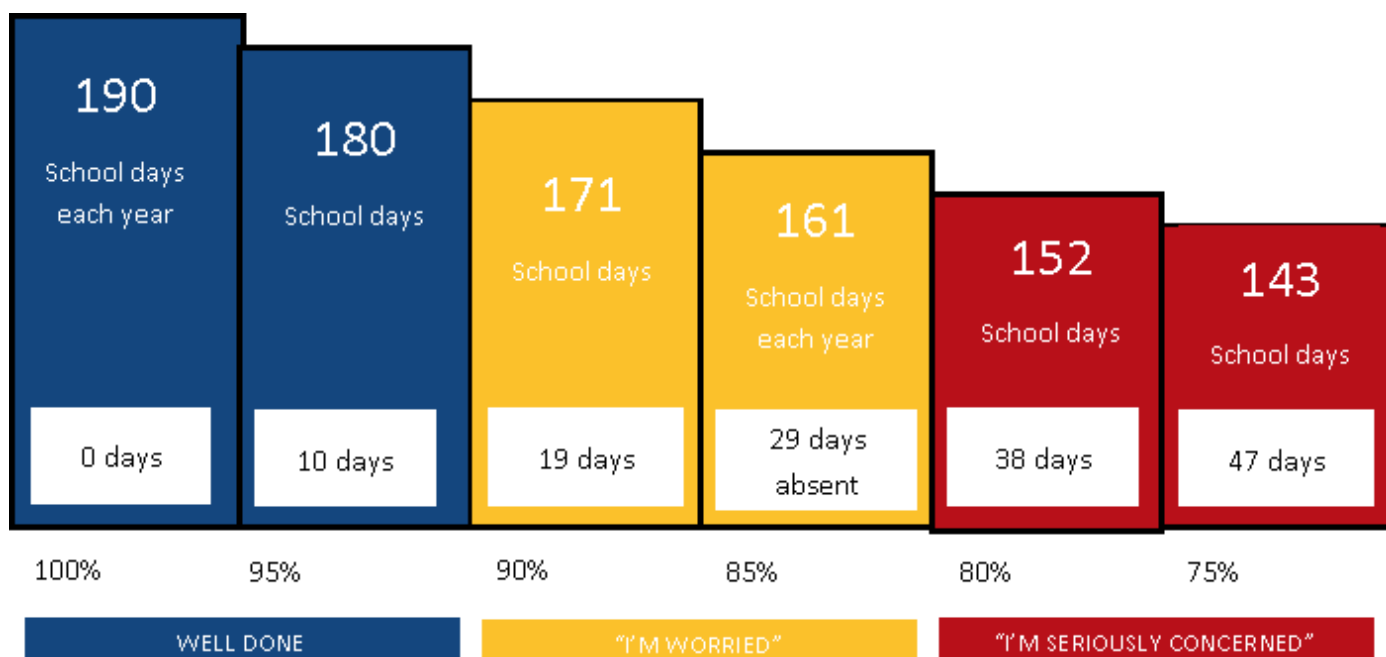
Please notify the school at **9218 6800**, via **email** or through **Compass** with a reason for your child's absence. Extended absences may require a medical certificate.

For more information, please speak to the Front Office or visit our website.

LEAVING SCHOOL GROUNDS

Students cannot leave for minor errands. These should be handled after school. If a child goes home for lunch, parents must sign them in and out. Any other arrangements require the Principal's approval.

DAYS AT SCHOOL



COMMUNICABLE DISEASES

Information on the exclusion periods for communicable diseases are provided by the Health Department. Parents are asked to notify the school immediately if their doctor has confirmed a diagnosis of a communicable disease.

MEDICATION

Students who need medication during school hours can be accommodated. Consent forms for staff to administer medication are available at the Front Office.

SICKNESS AND ACCIDENTS

Sick students should stay home. Parents are contacted if a child is unwell or injured. Ensure the school has up-to-date contact details and an emergency contact.
Notify the office of any changes.

FOOD ALLERGIES

We are a Nut Aware school due to life-threatening allergies. Please avoid sending nut products to school. Contact the Front Office for any questions or clarification.

SCHOOL UNIFORM

Navy polo shirt, jacket, pants, wide-brim hat, and enclosed shoes.

- No jeans, makeup, or body piercings (only a watch and stud/sleeper earrings allowed).
- Long hair must be tied back if past shoulders.
- Hats are required for outdoor activities (No Hat, No Play).
- Enclosed shoes only—no thongs.
- Lost property is outside the Deputy's office. Label all removable items.



**Purchase Uniform
Front Office**
Monday - Friday
8:30am - 3:30pm



EXPECTATIONS

08



PARENT-SCHOOL CONTACT

Parents should not interrupt teachers during class time but can request an appointment. For complaints or significant issues, contact the Principal or Deputy Principal first. All visitors must sign in at the office and wear a badge.

STUDENT REQUIREMENTS

Parents must provide all items on the booklist, ensuring they are replaced as needed. Items can be purchased directly or pre-ordered online. A copy of the list is available at the Front Office or on our website.

OUR TEAM

ADMINISTRATION

Principal - Mrs Tania Leete
Deputy Principal - Mrs Michelle Muriuki
Deputy Principal - Miss Melanie Dragon
Learning Support Coordinator - Mrs Rebecca Dennis
Complex Behaviour Coordinator - Mr Brendan Bono
Manager Corporate Services - Mrs Dee Cooke
School Officer - Miss Kate Marsh & Miss Sharnie Cooke



TEACHING STAFF

Mrs Dianna Panzich-Sekulla
Mrs Janelle Deall
Mrs Kristy Munro
Miss Rebecca Spanjich
Mrs Charmaine Farah
Miss Paula Fitzsimons
Miss Fleur Hockey
Mrs Natalia Schulstad
Mrs Adrienne Leak
Miss Natalia Berelowitz
Miss Josephine Lee
Mr Eathen Page
Mrs Alyce Rogers
Mrs Oppen Tafira
Mr Shaun Buckingham
Miss Peta Tree
Mrs Sancia White
Miss Emily Galvin
Miss Kate Swenson
Mrs Olivia Stead
Miss Claire Savage

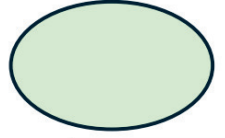
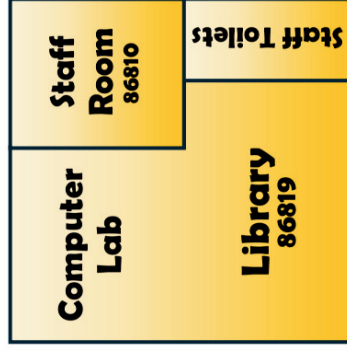
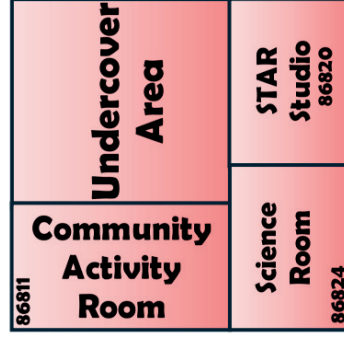
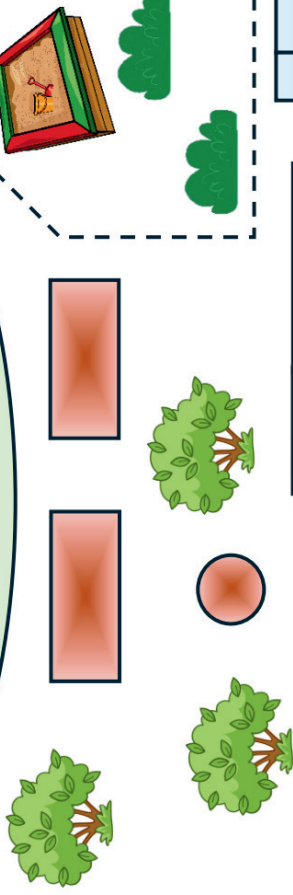
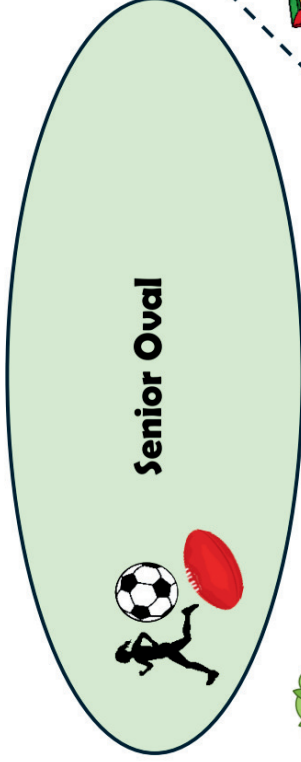
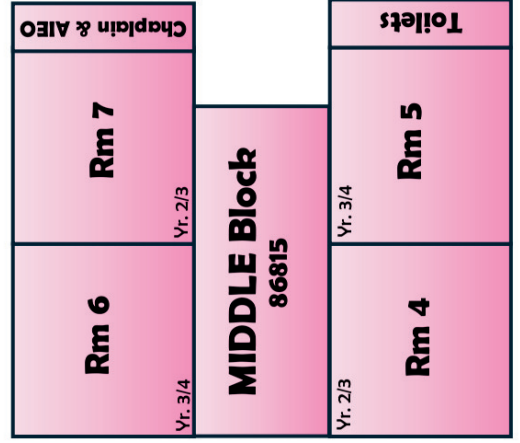
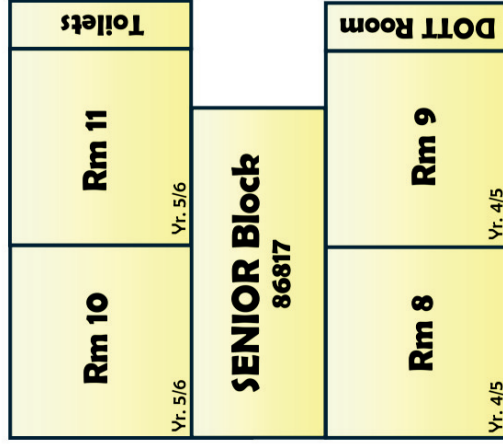
SUPPORT STAFF

Miss Nicole Meredith
Mrs Maria Bazarte
Mrs Susana Harigusnami
Mrs Melinda Reynolds
Mrs Maricris Demin
Mrs Monique Elias
Mrs Milka Harrison
Mrs Karen Jones
Mrs Maribel Labog
Mrs Heather Lawler
Miss Kylie Letts
Miss Amy Lock
Mrs Joanne Maslin
Mr Frank Moylan
Mrs Biew Moylan
Mrs Marisa Oliver
Mrs Rachel Regan
Mrs Andrea Trinidad
Miss Jennifer Wilken
Miss Penny Bays
Mrs Esther Maxwell
Miss Bella Biundo
Miss Courtney Doropoulos
Miss Terri Burke

SCHOOL MAP

09

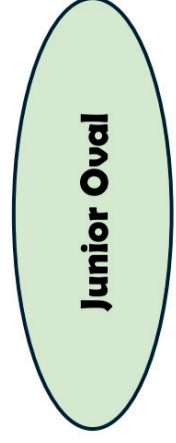
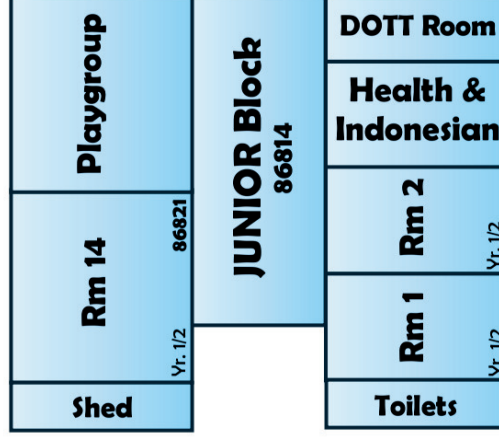
←----- Morrison Rd. -----→



----- Admin Gate -----

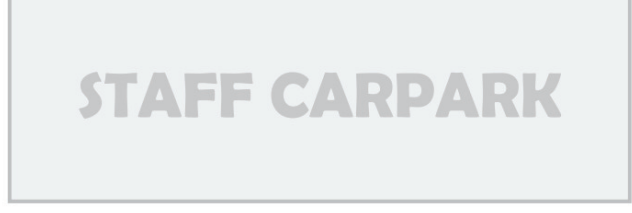


←----- Midvale Pl. -----→



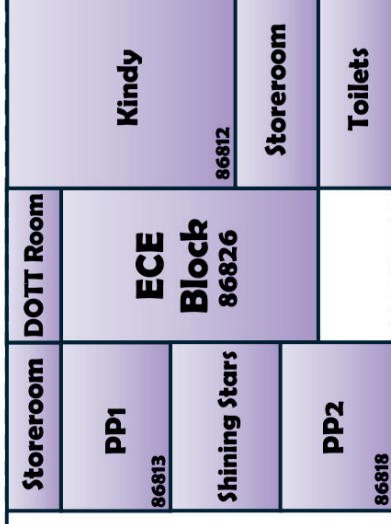
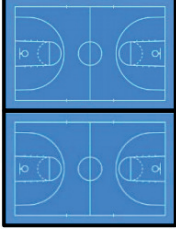
Nature Play

Gardener Shed



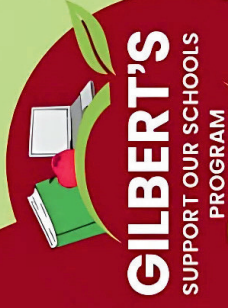
----- Side Gate -----

----- Wallaton St. ----->



PROGRAMMES

SUPPORT OUR SCHOOLS PROGRAM (SOS)



JOIN TO HELP
OUR LOCAL
SCHOOLS



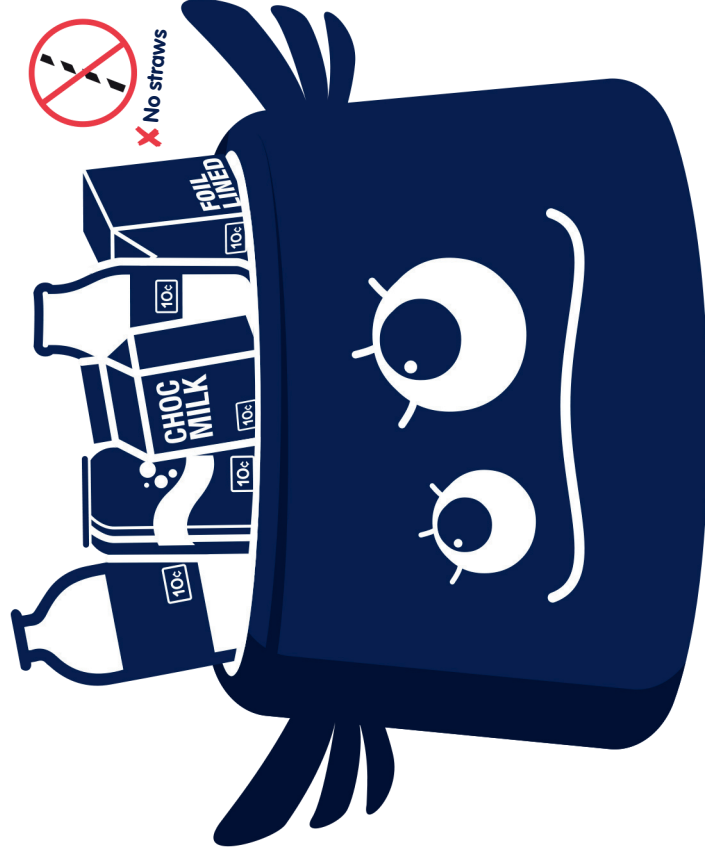
**SIGN UP
IN-STORE
TODAY!**



Gilbert's Fresh Market donates 1% of the money spent by you to your nominated school every time you shop with us! Sign up at the checkout and simply present your SOS card for scanning each time you shop to earn funds for your school.

It's free & available to all customers!
gilbertsfresh.com.au

CHECK FOR THE **10c** MARK



Your containers can make a change to Midvale Primary

Recycling bags and bins can be found in all classroom
alfresco areas and at the front of the office.

All profits go towards our breakfast programme, Crunch 'n' Sip
and other school initiatives.

